

2013

Les Prothèses du Genou

Ph Neyret

E Servien

S Lustig

G Demey

V Duthon





UNIVERSITY TEACHING CENTER



Quelles sont les familles
de PROTHESE de
GENOU disponibles?

Contraintes

TRI 2C CP PS

Charnière

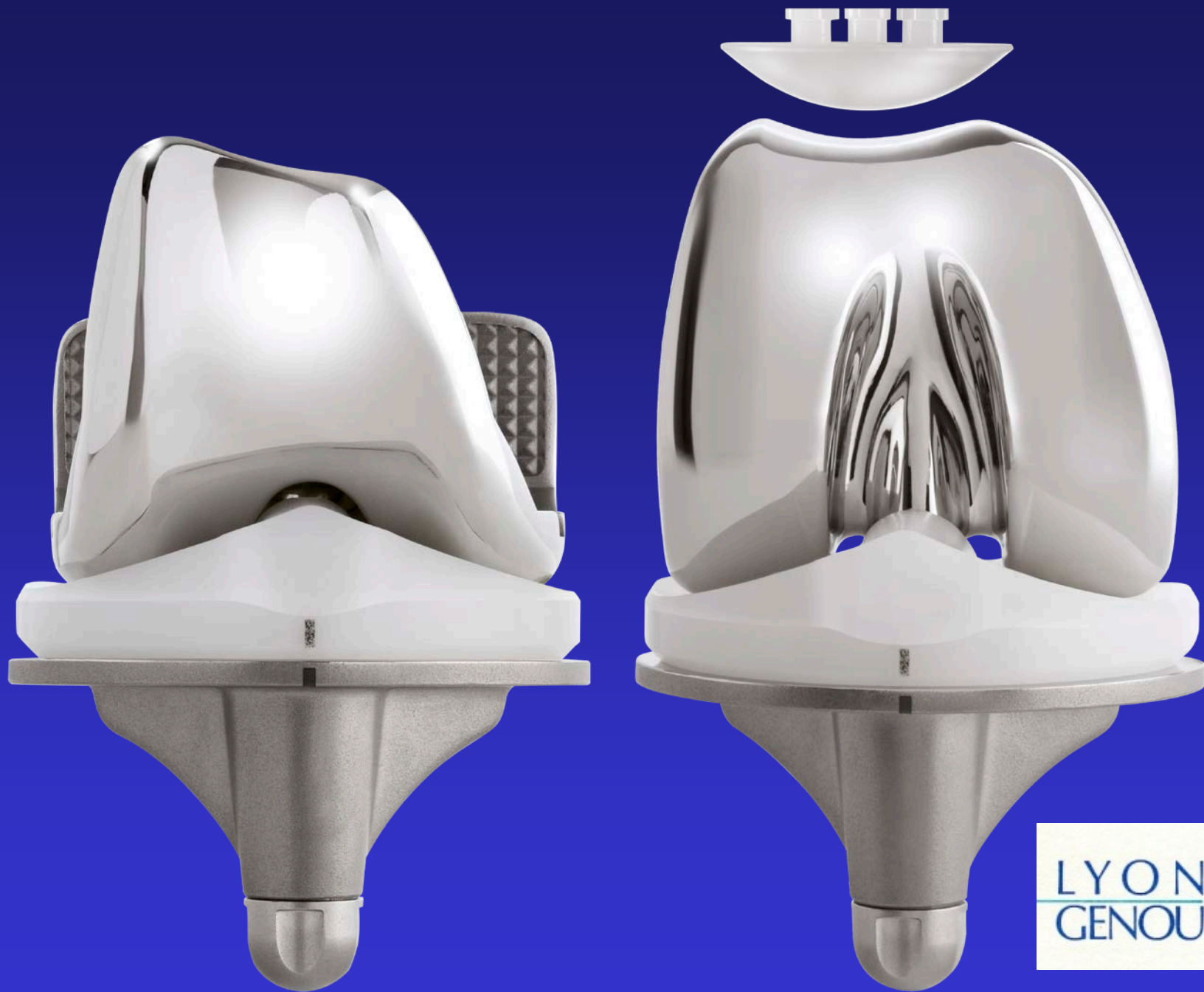
Rotatoire

Pivot Rotatoire

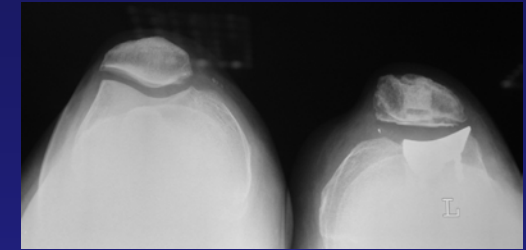
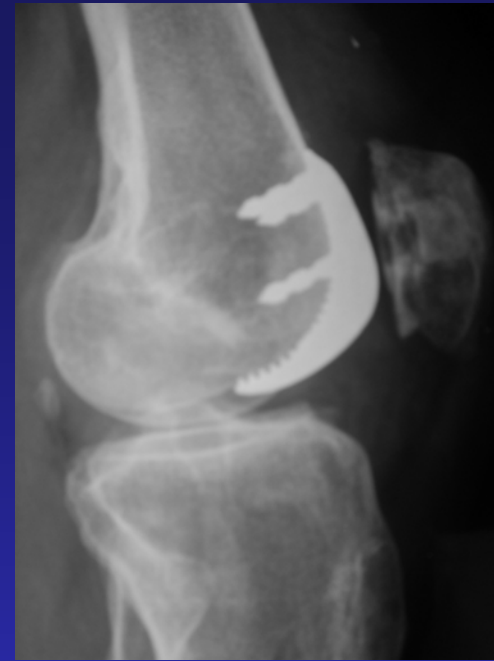
UNI

Fixe





HLS Uni Evolution

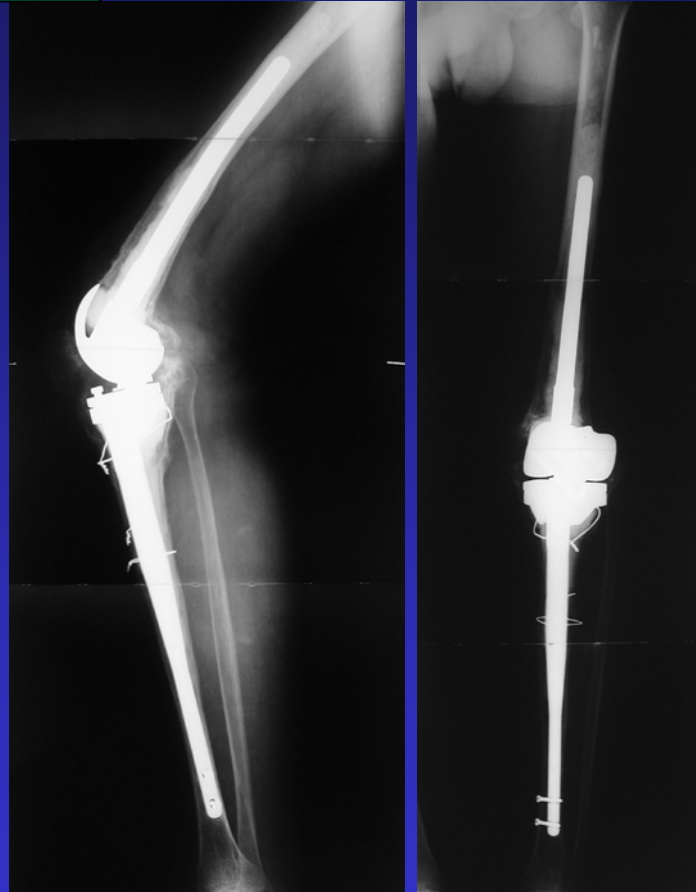


P. Fémoro-patellaire



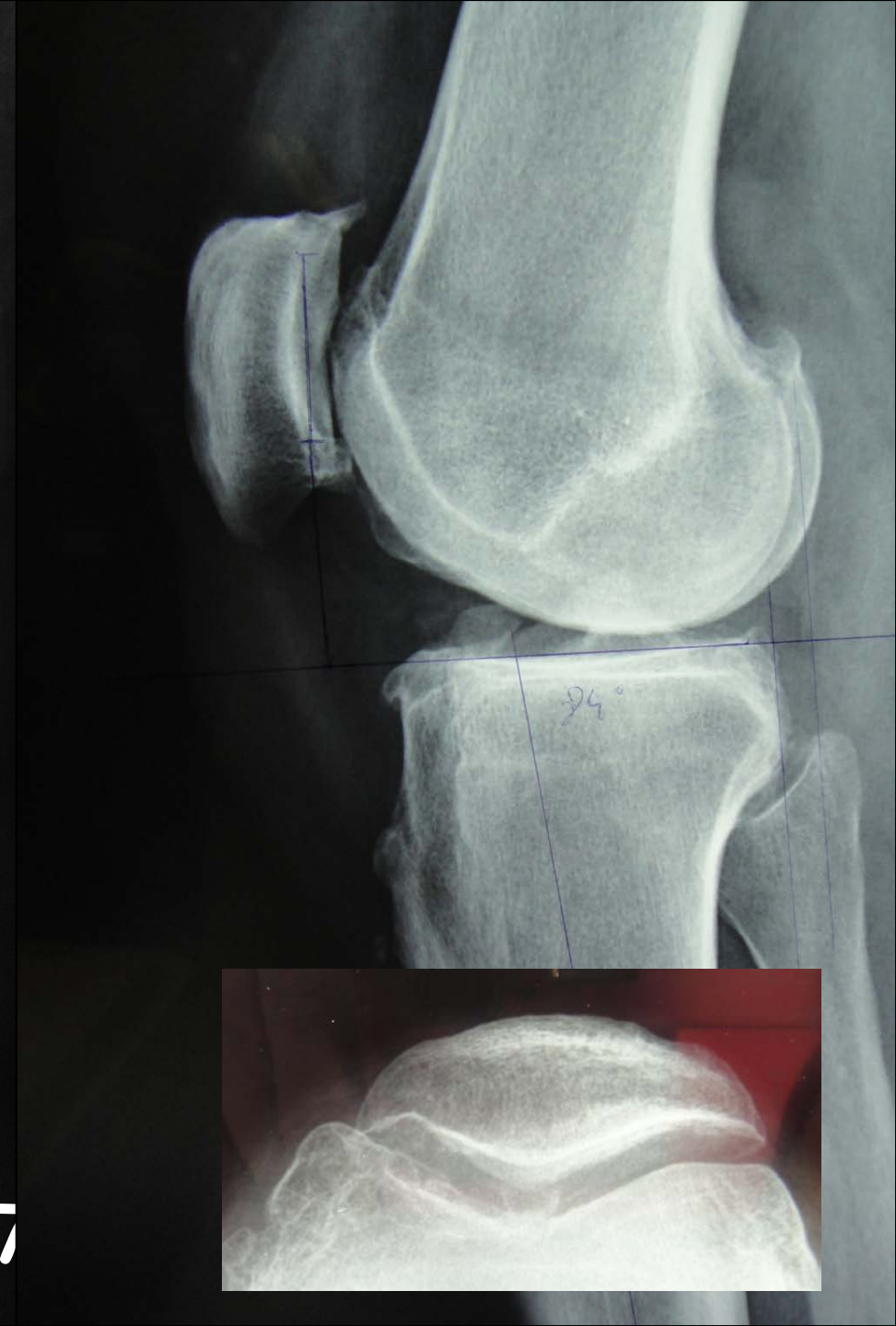
HLS Revision

Prothèse Charniere



Prothèse à pivot rotatoire

Bilan Radio Diagnostic ?



Lap.. Monique née en 1957



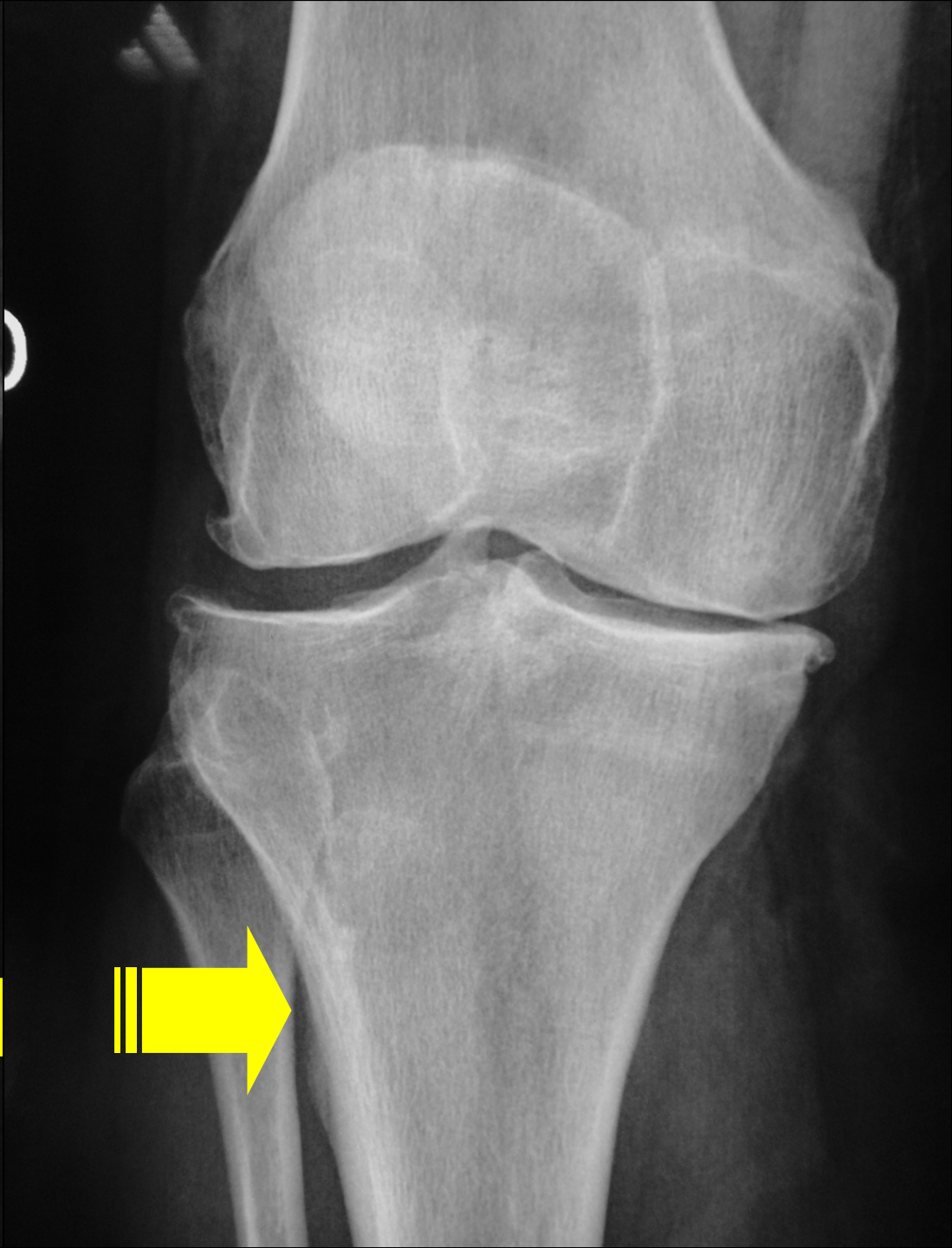
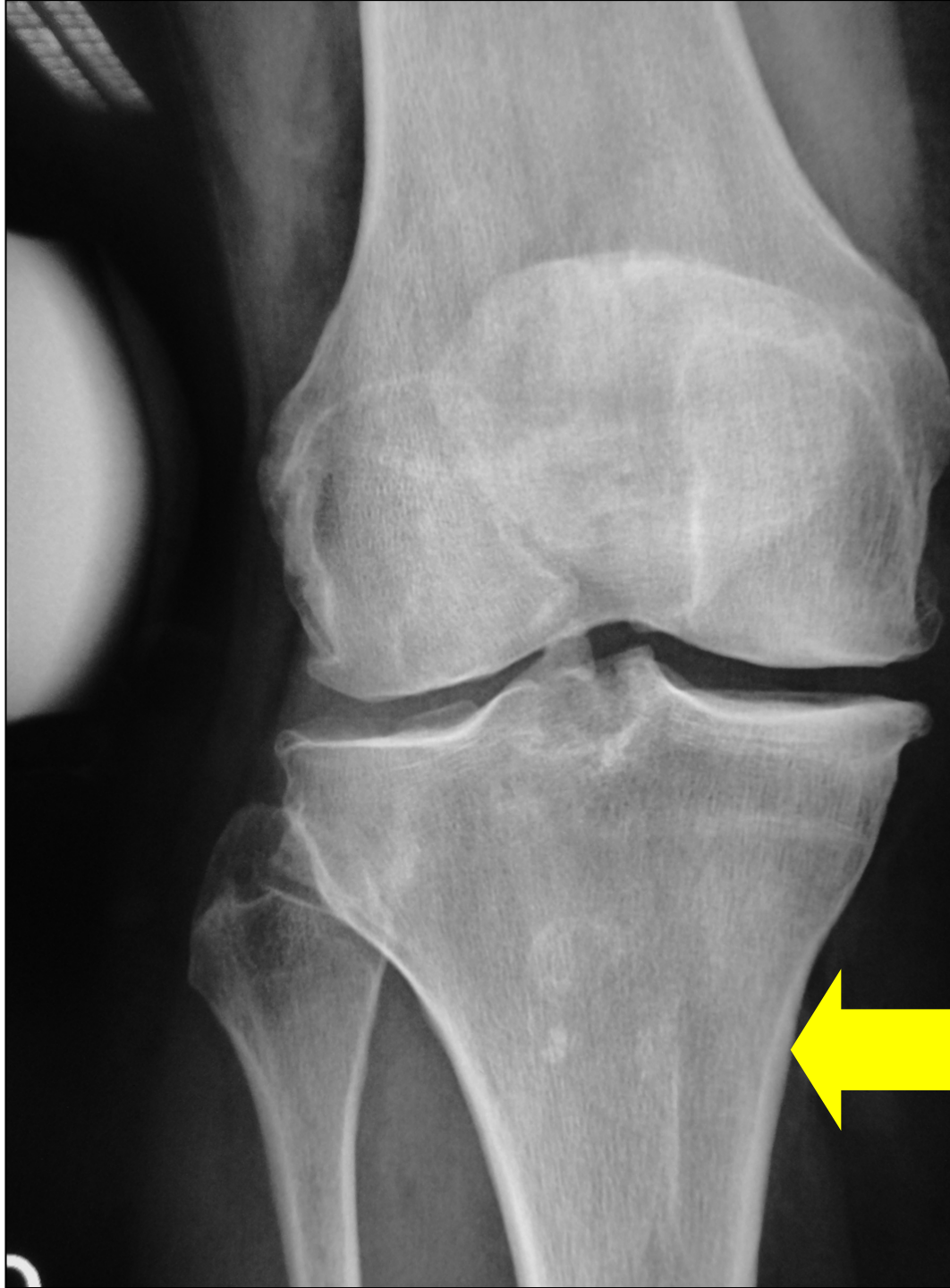
Bilan Radio Pré-opératoire

24:53



5
6
7
8
9
10
11
12
13
14
15
16
17
18
19
20
21
22
23
24
25

70
65
60
55
50
45
40
35
30
25
20
15

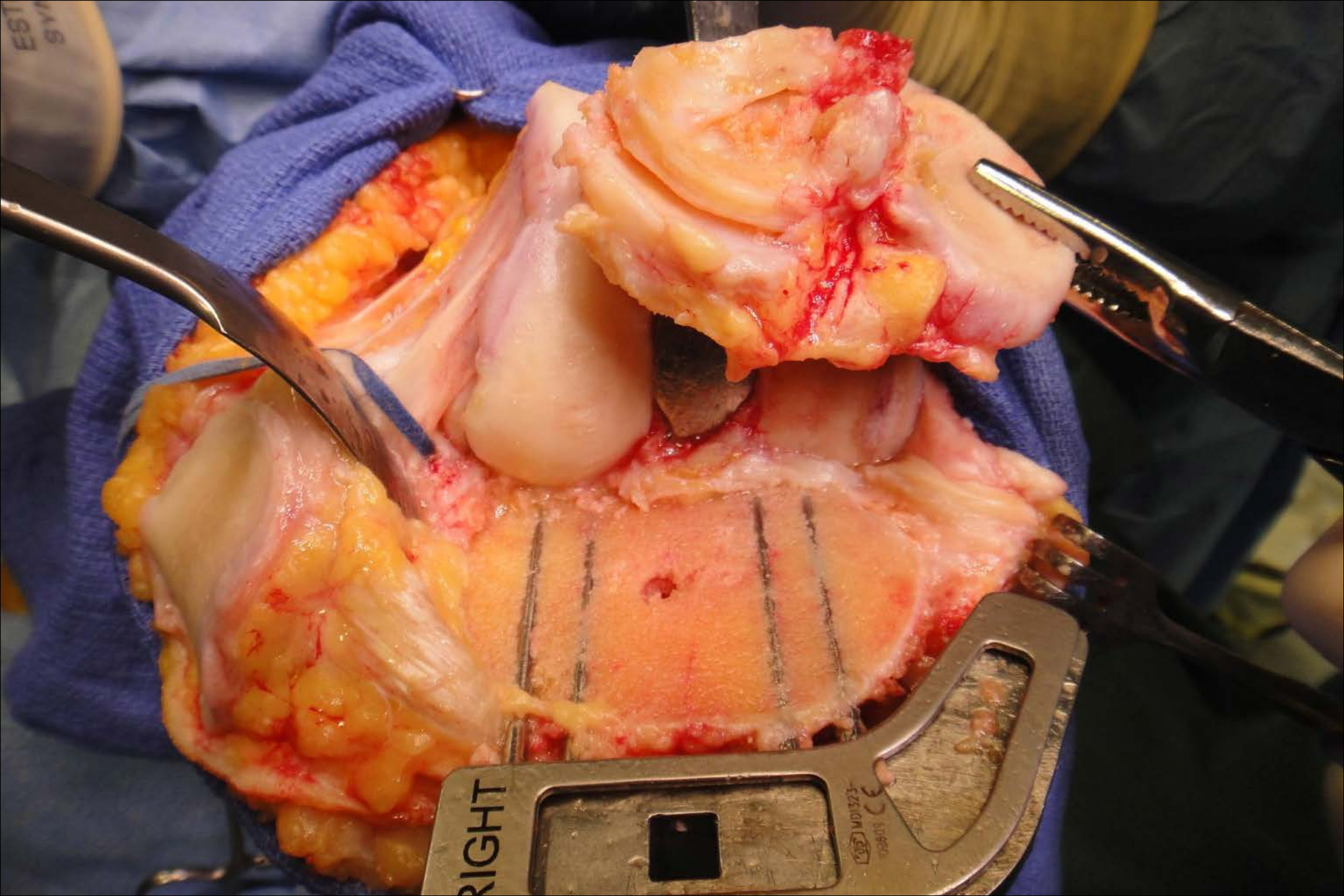


- Pas D'IRM
- Rarement CT Scan
sauf peut être à l'avenir pour des solutions individualisées
- Pas de scinti ni arthroscopie

Technique

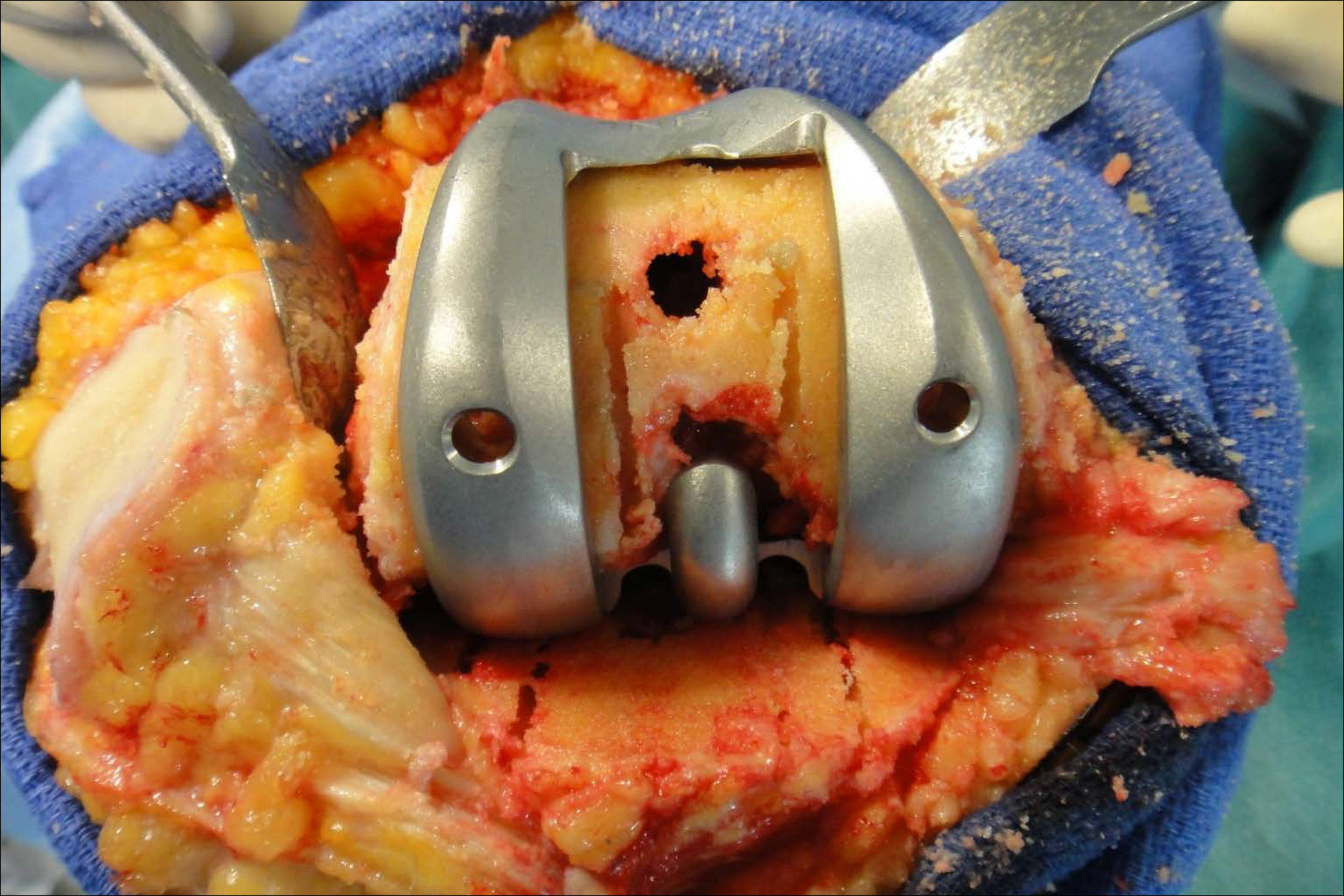


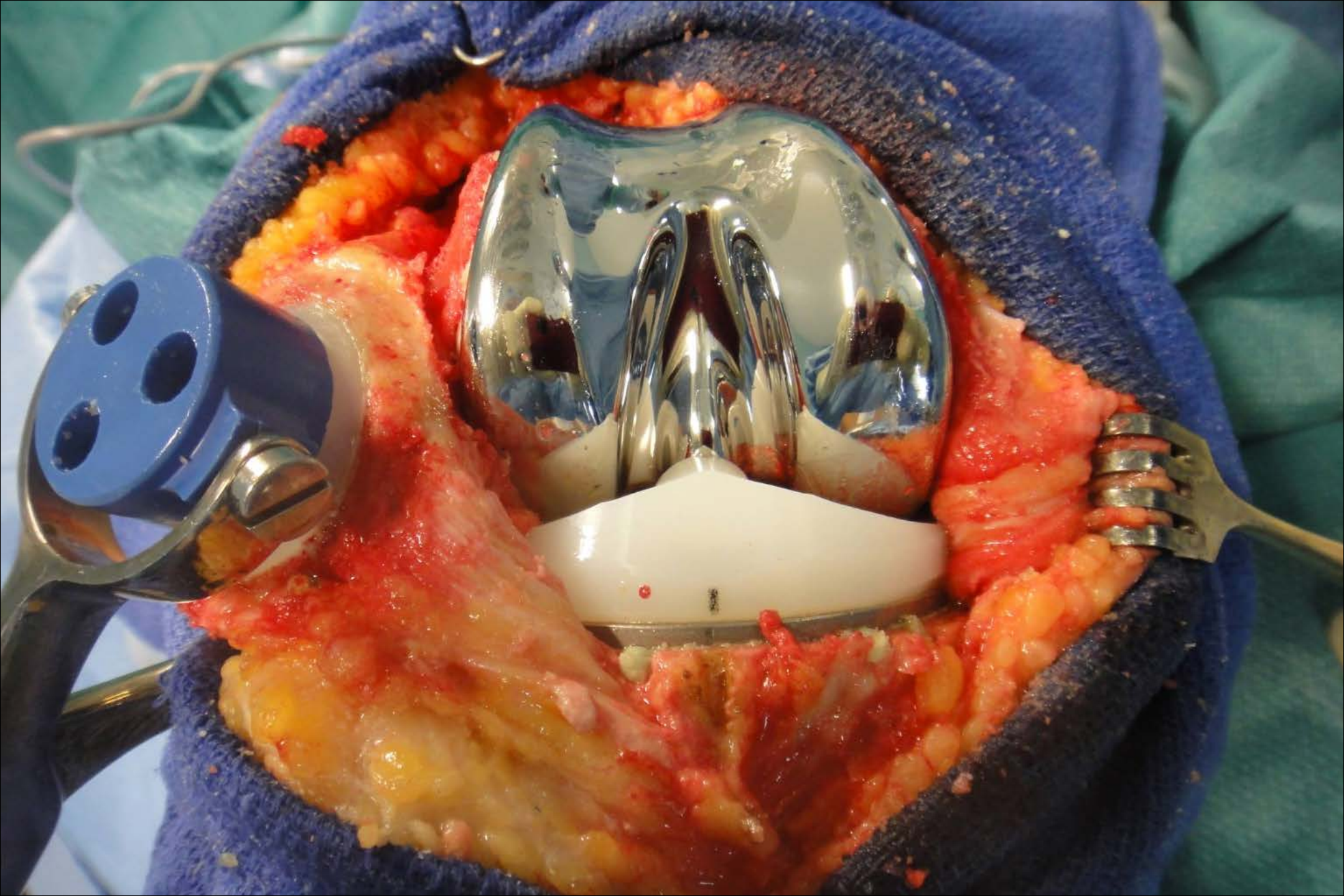
TECHNIQUE PTG



RIGHT

MD1323
19803 CE





Le Futur ?

2011

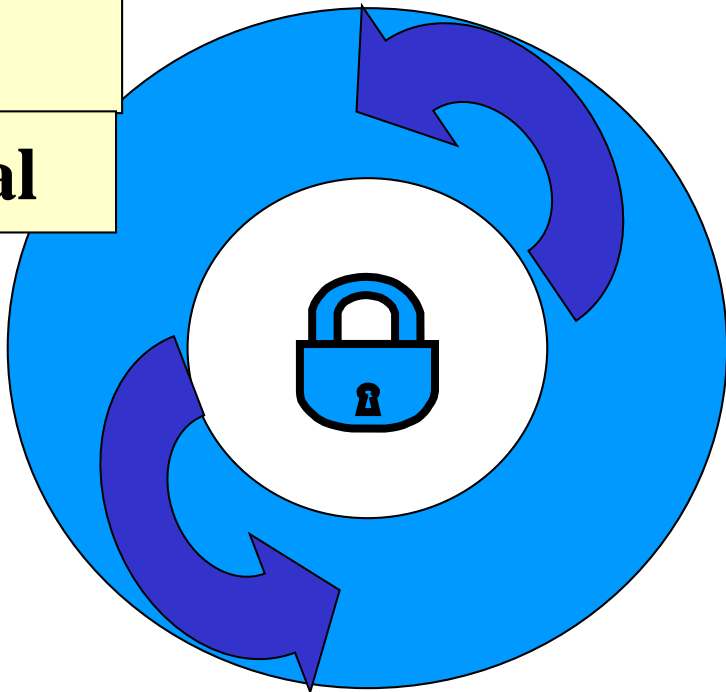
**P
R
E
C
I
S
I
O
N**

**R
E
P
R
O
D
U
C
T
I
B
I
L
I
T
É**

**M
I
S**

médical

chirurgical



Dessin

Biomatériaux

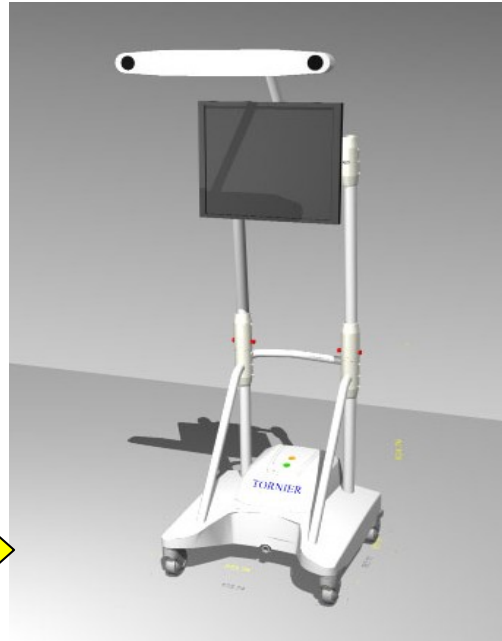
Fixation

2018

Technique

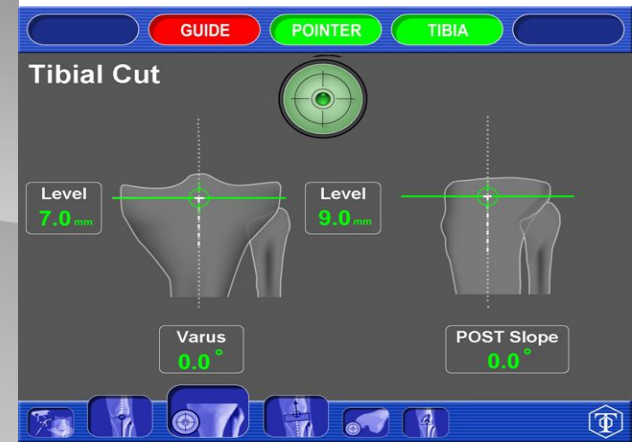
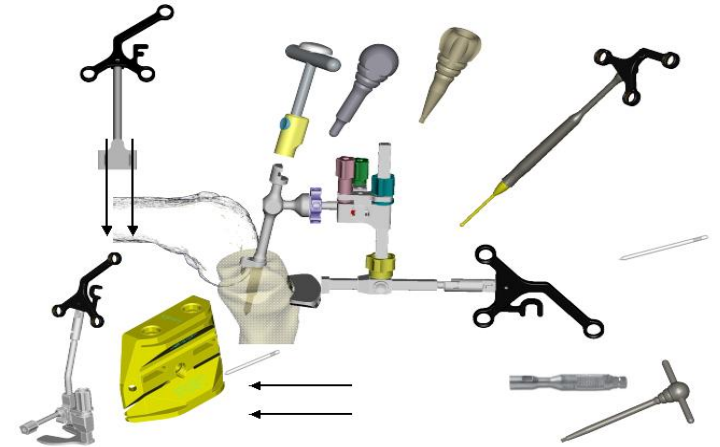
Implant

PLEOS Knee

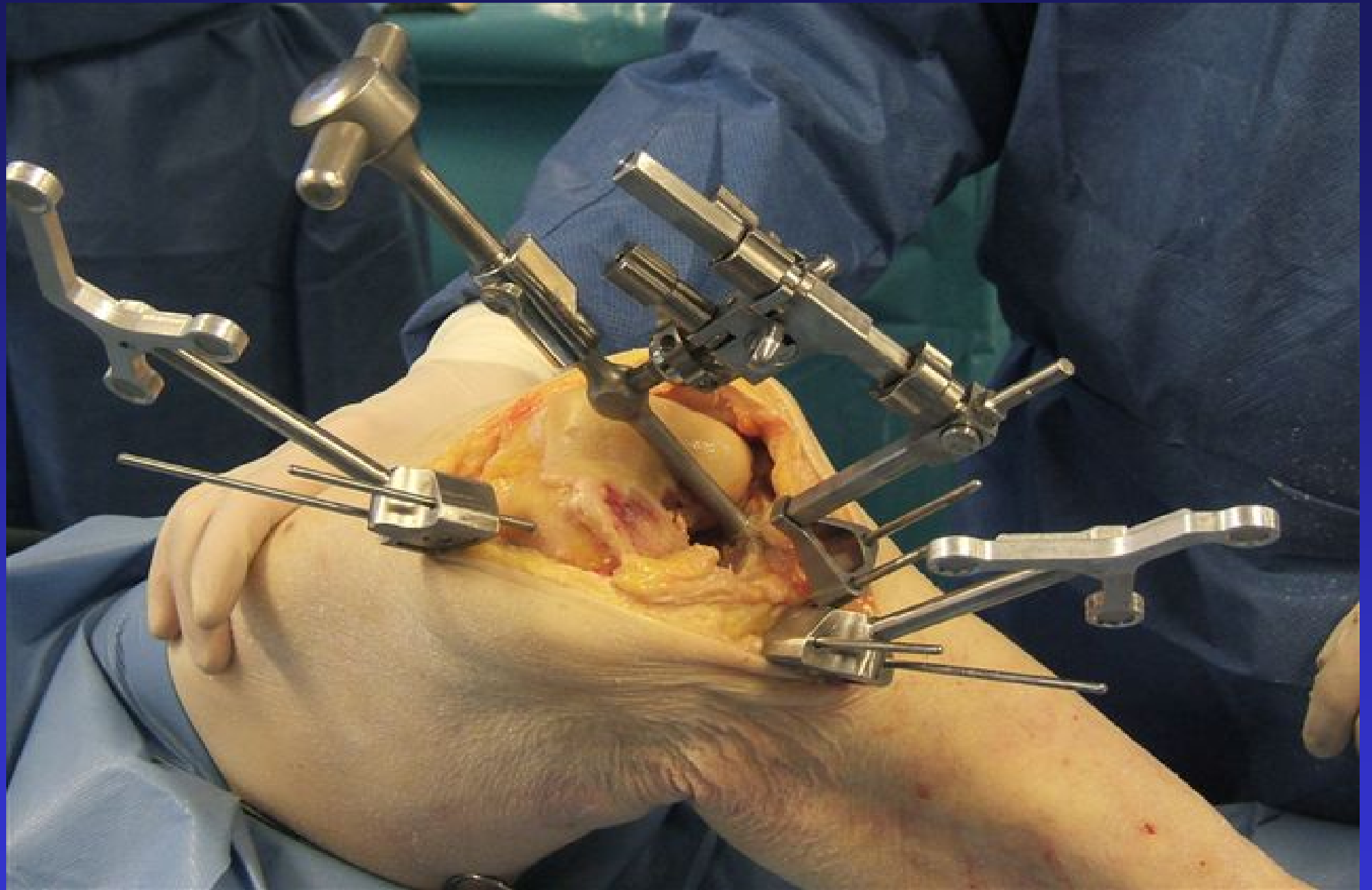


Platform

Instruments



Software



WORKFLOW – Ligament Balancing Extension



FEMUR POINTER TIBIA

Ligament Balance in Extension

Flexion 0.0°

Valgus Fémoral 5.0°

10 0 10

10.0 mm

20 mm 15 mm

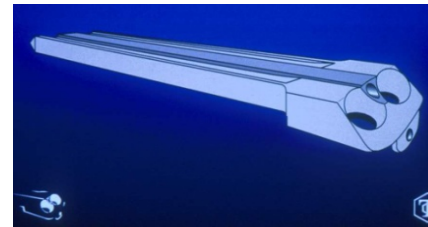
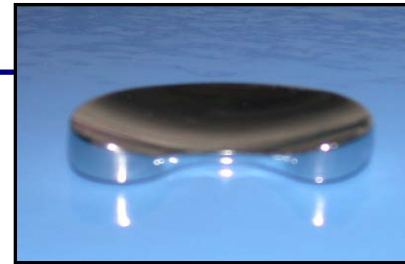
HKA 185.0°

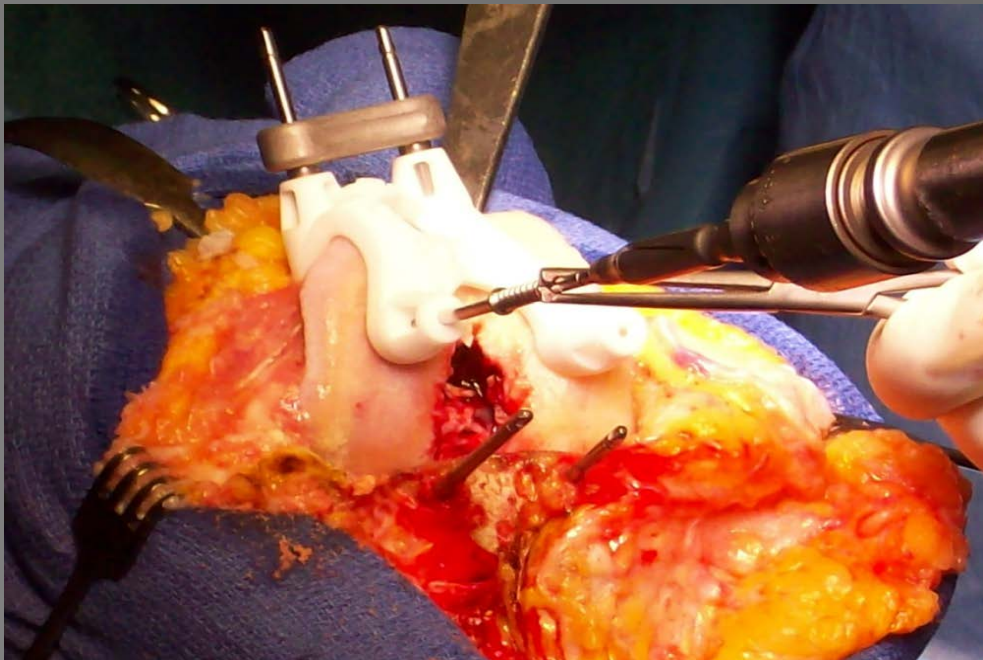
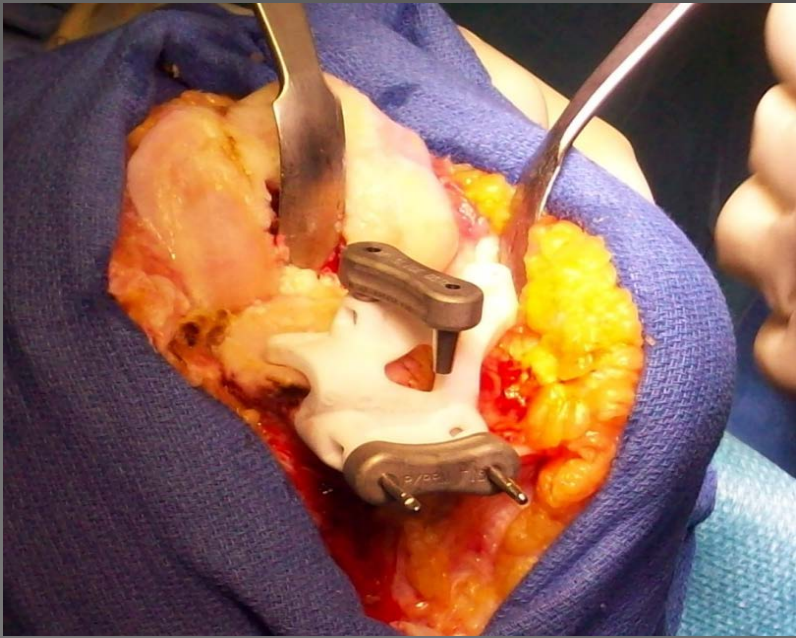
PE (mm) 9

170 180 190

The interface displays a 3D model of the femur on the left and a knee joint diagram on the right. The knee diagram shows a valgus angle of 5.0 degrees and a flexion of 0.0 degrees. A horizontal line across the knee indicates a 10.0 mm distance. Below this, two yellow vertical bars represent 20 mm and 15 mm measurements. A control panel for PE (mm) is set to 9, and an HKA angle of 185.0 degrees is shown. A scale at the bottom indicates 170, 180, and 190. A green checkmark icon is visible in the bottom right corner.

- Setup
- Control
- Tibia
- Simulation/
Balancing
- Femur
- Control
- ★ Ligament
- ★ position





Pourquoi choisir une Ostéotomie, Uni ou une PTG?

...si le traitement
médical a échoué



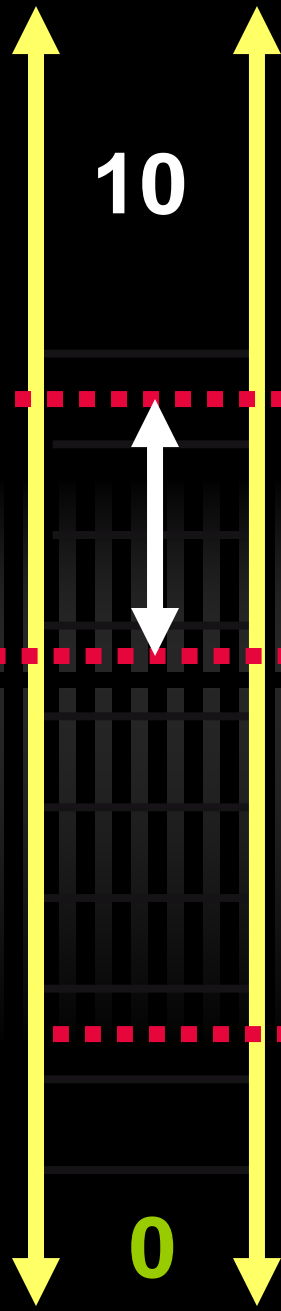
Résultat
fonctionnel
attendu

Résultat
fonctionnel
obtenu

Etat
fonctionnel
pré-op

Satisfaction du
patient

Information



10

0

Pondération des différents facteurs

Critères anatomiques

- Arthrose/stade
- Déformation et réductibilité
- Ligament
- Amplitudes

Critères cliniques

- Age et résultat attendu
- Poids
- Etat général (diabète cardiovasc, plavix..)
- Atcd chirurgical ou infectieux

Ostéotomie

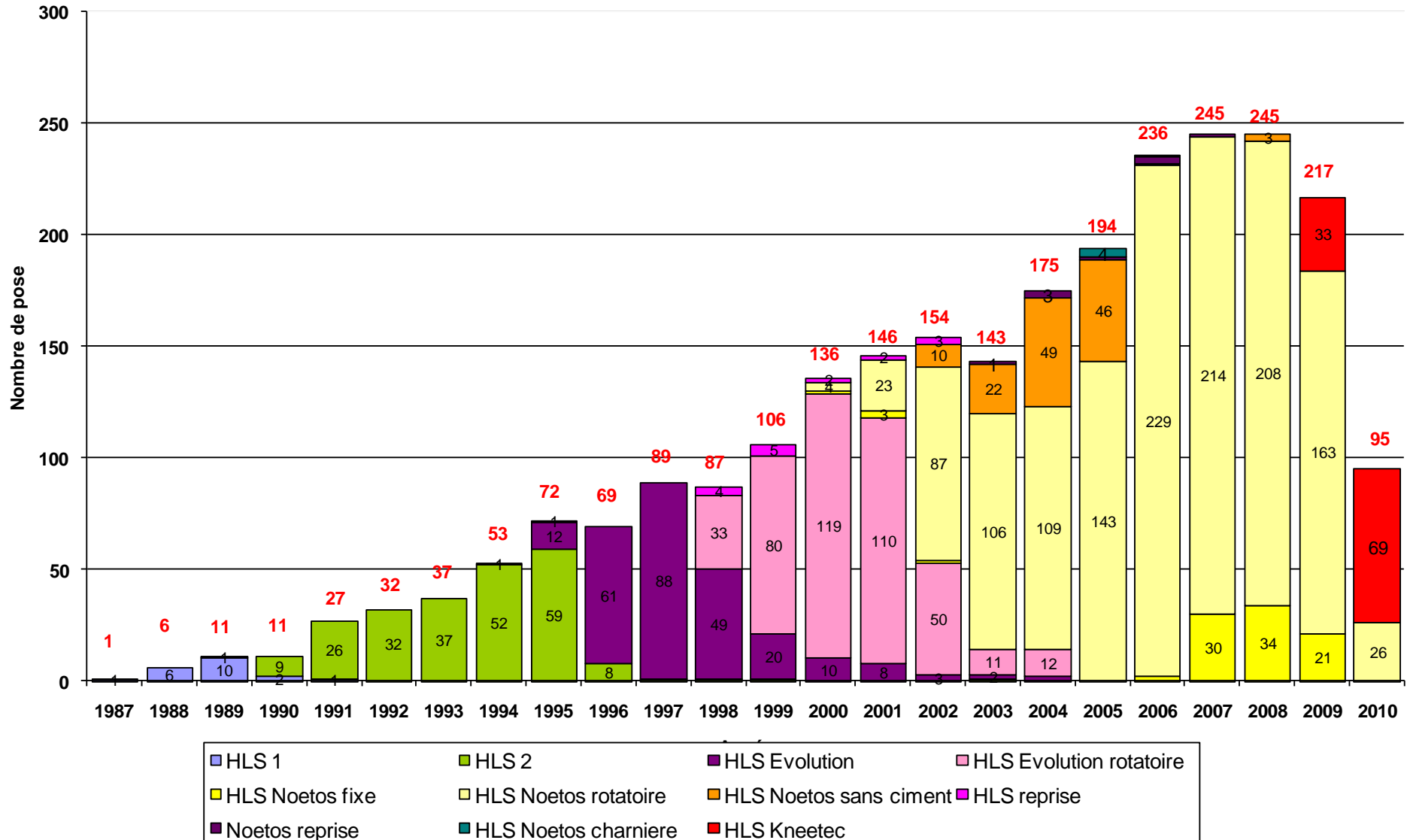


Uni

PTG

Répartition des poses de premiere intention par années

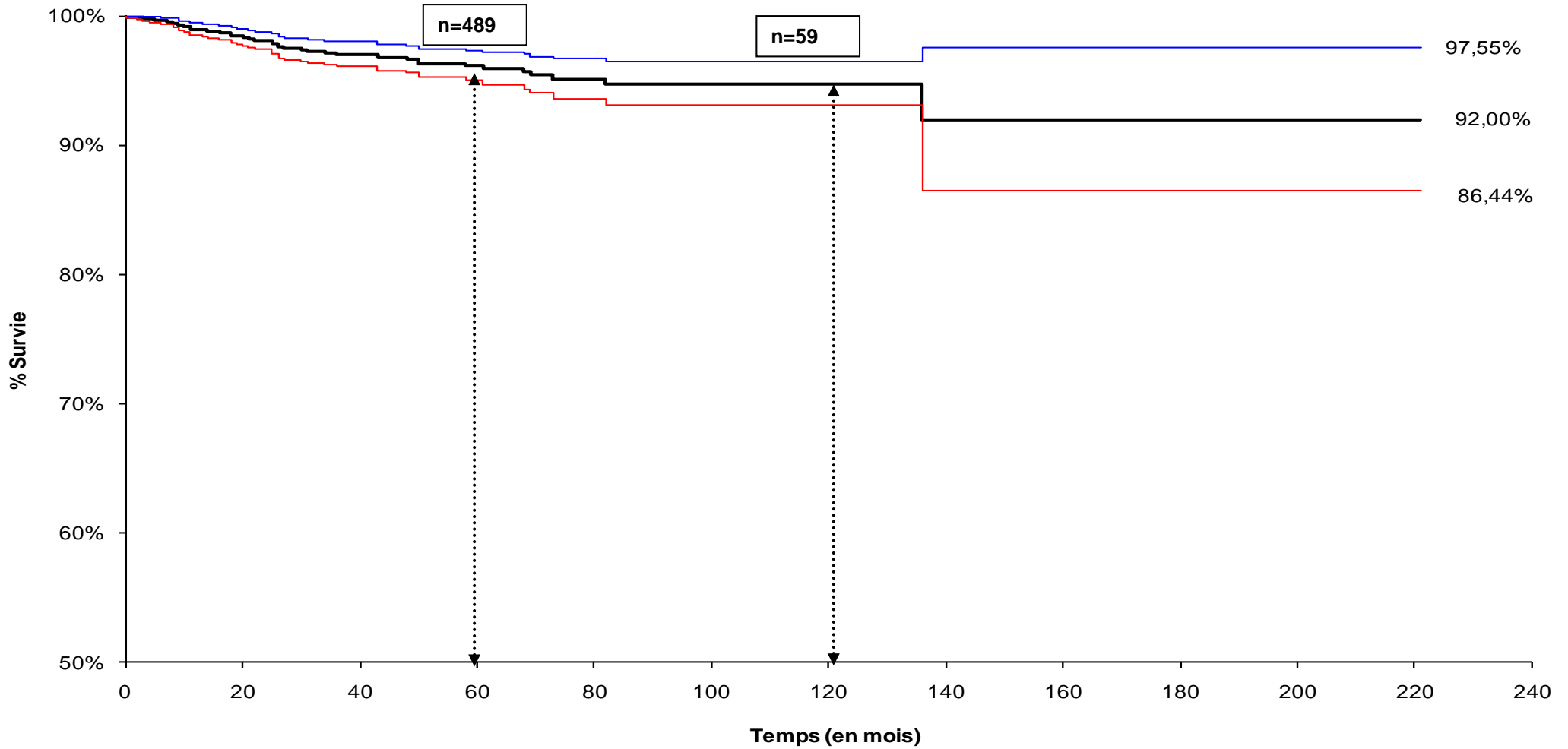
n= 2586



Courbe de survie (Kaplan Meier)
Echec=remplacement composant tibial ou fémoral
(simple changement bouton rotulien ou PE exclus)

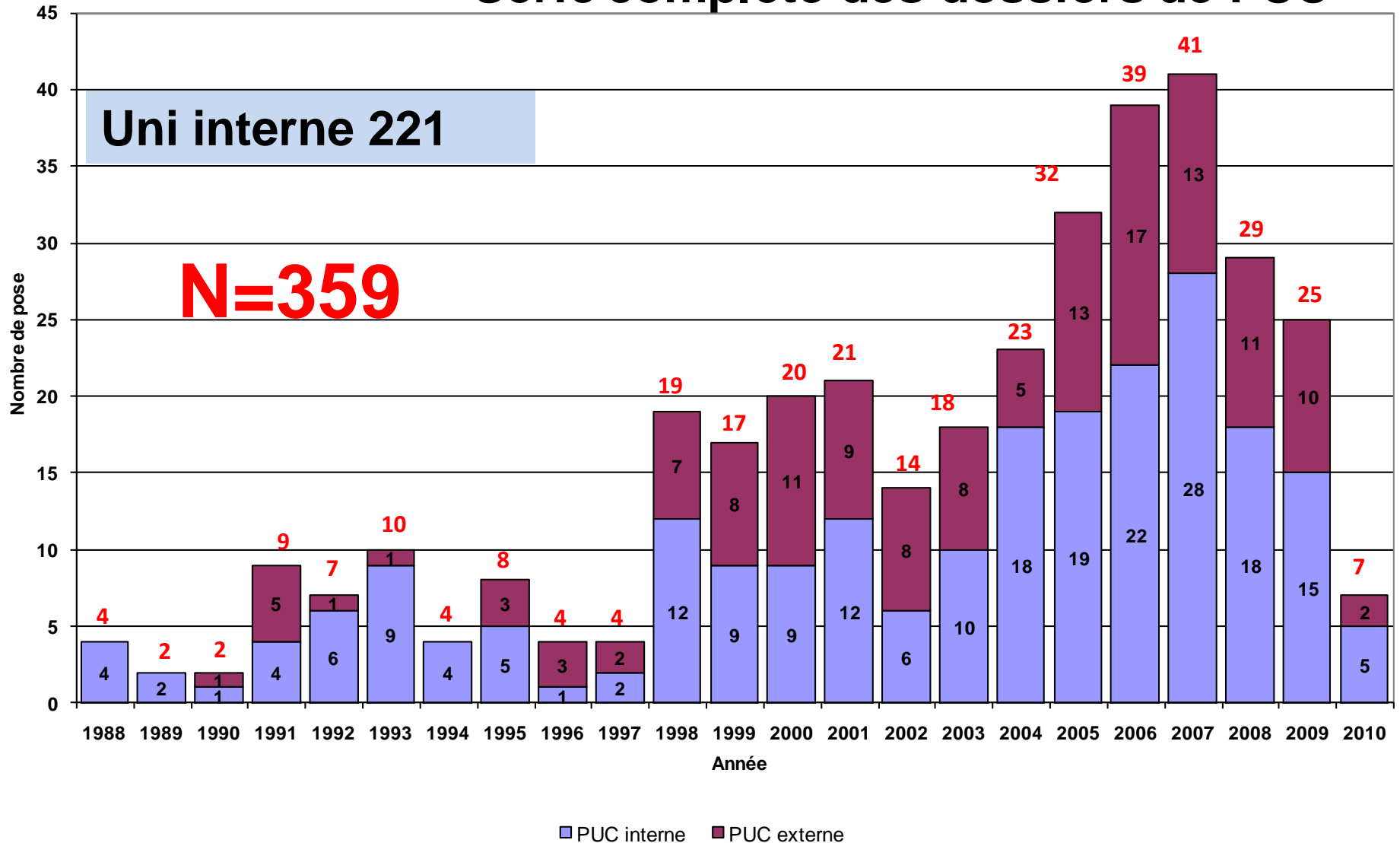
Nombre de dossiers suivis=2163

Recul moyen=36.75 mois



Répartition des poses de PUC par années

Série complète des dossiers de PUC

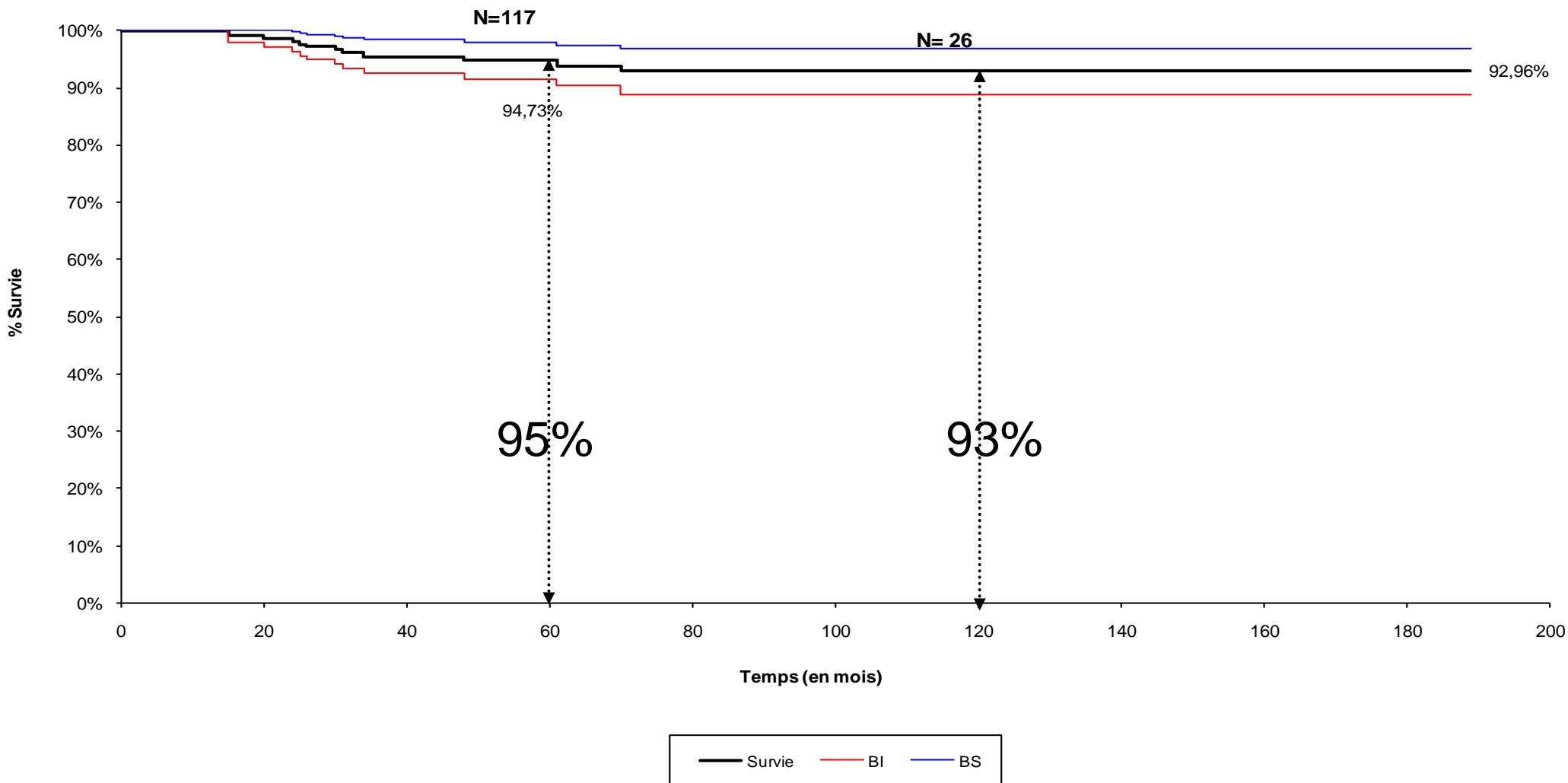


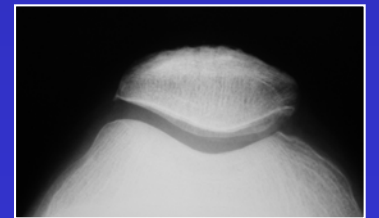
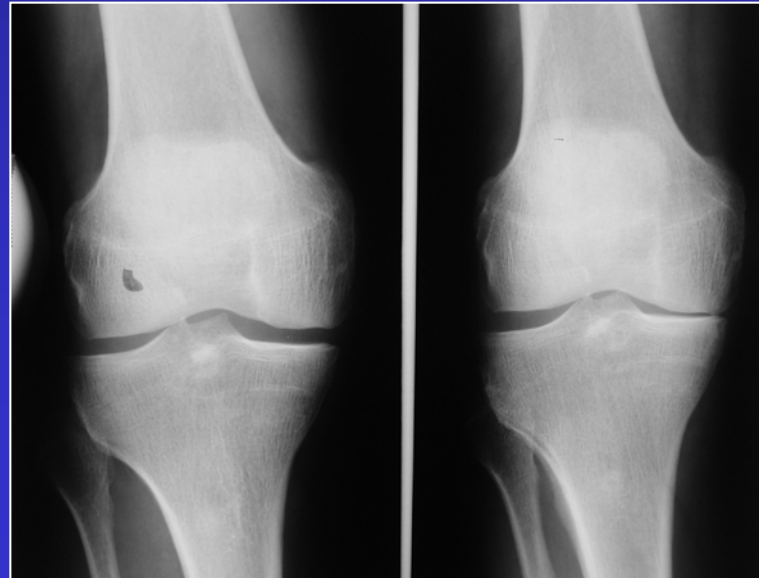
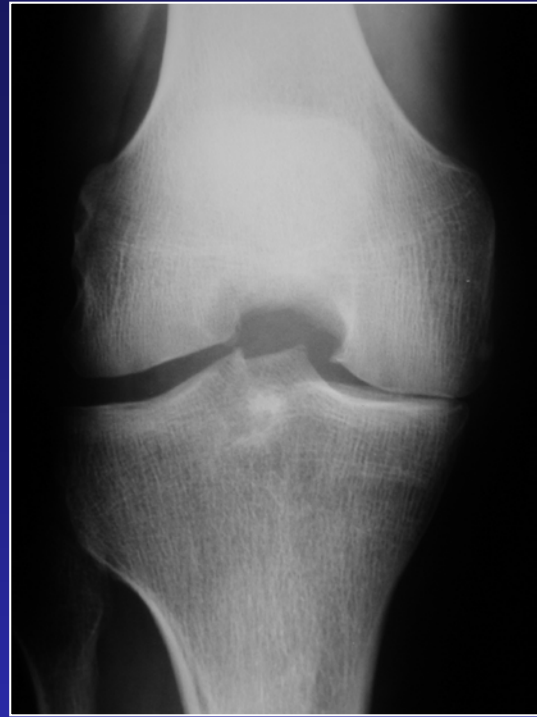
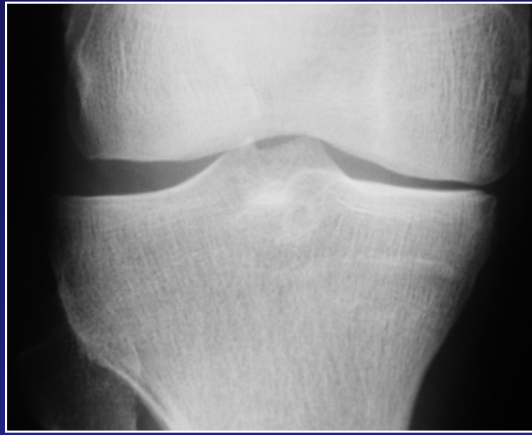
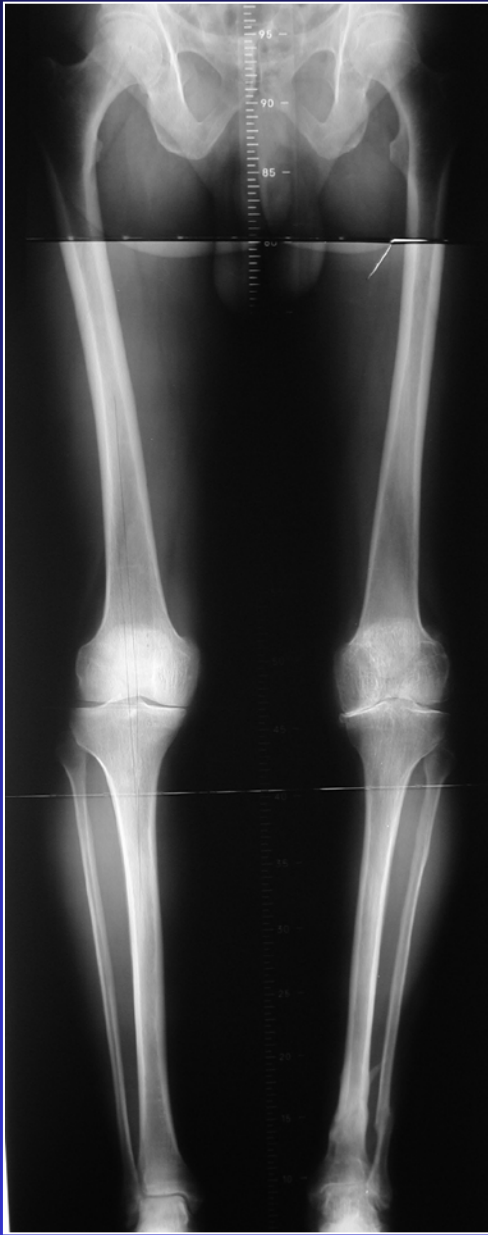
Courbe de survie (Kaplan meier)

Echec=remplacement d'un ou de plusieurs élément de l'implant (quel qu'il soit)

n = 359

Recul moyen= 43 mois

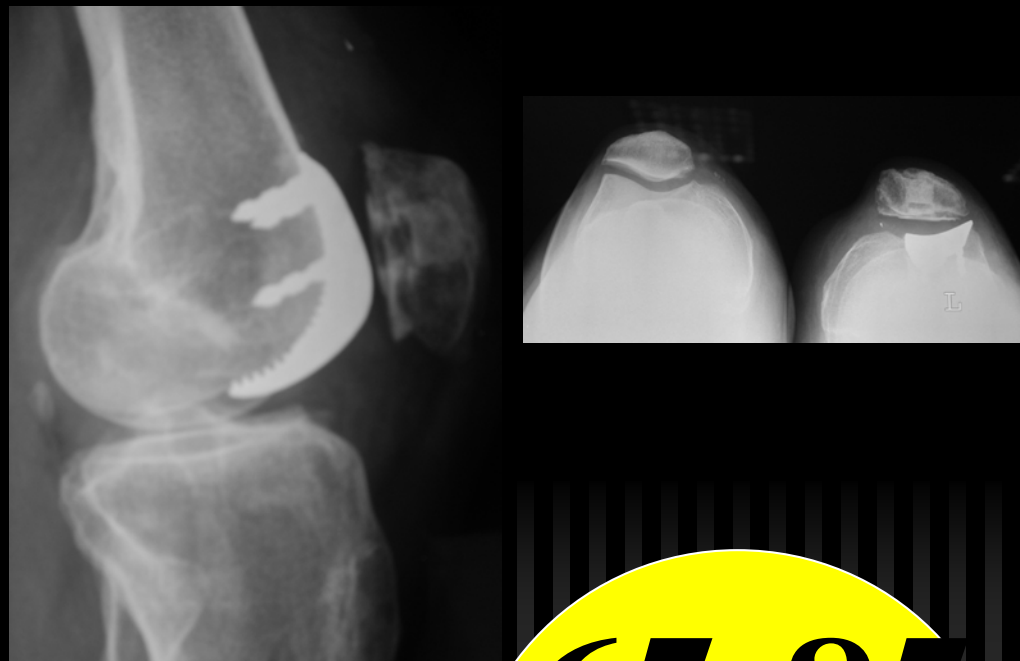








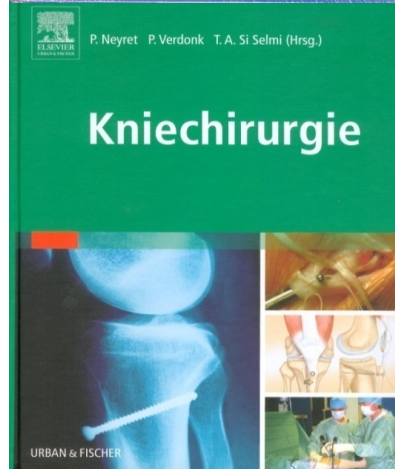
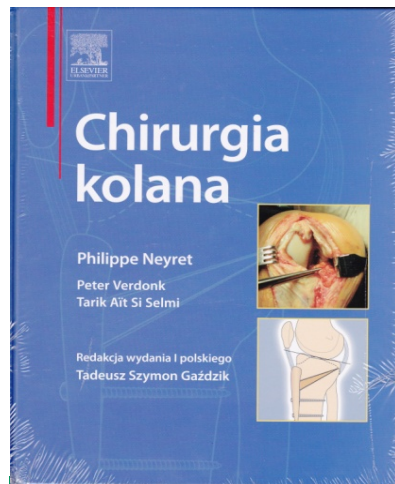
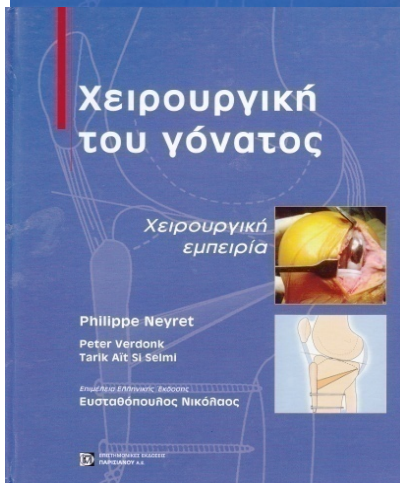
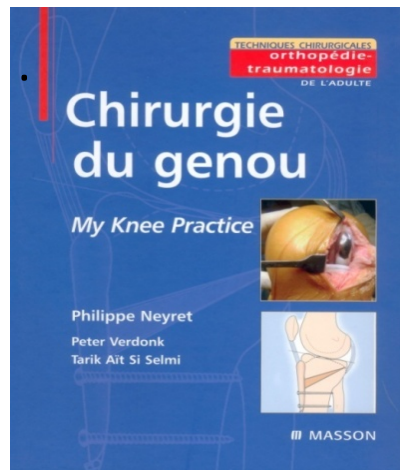
Prothèse fémoro-patellaire



65-85
%

10 ans de suivi

aatrillat@gmail.com



Merci

2013

Les Prothèses du Genou

Ph Neyret

E Servien

S Lustig

G Demey

V Duthon

